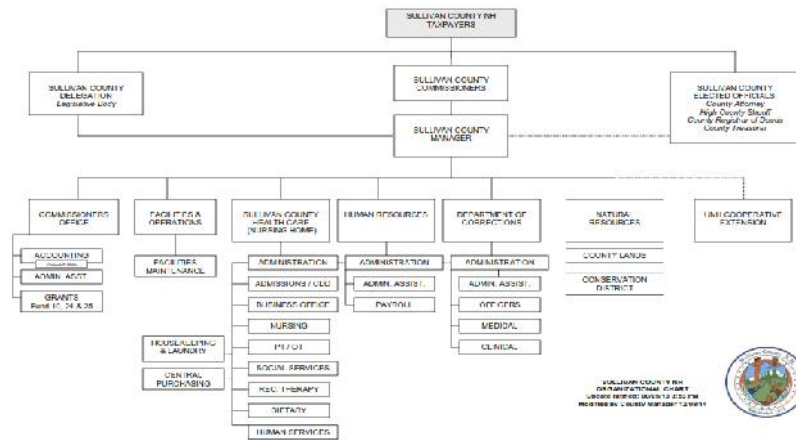


# SULLIVAN COUNTY : WHAT IT DOES, HOW IT WORKS, HOW MUCH IT COSTS, WHAT YOU PAY

Presentation to Claremont Citizens  
June 18, 2015

[www.sullivancountynh.gov](http://www.sullivancountynh.gov)

## Sullivan County Org Chart



## County Departments

### Elected & Located in Newport

- County Commissioners: Jeff Barrette, Bennie Nelson, Ethel Jarvis
- County Attorney Marc Hathaway
- High Sheriff John Simonds
- Register of Deeds Chaunee Baker
- Treasurer Michael Sanderson

### Appointed & Located in Newport

- Jessie Levine, County Manager
- Regional Public Health Network: Jessica Rosman, Emergency Preparedness Coordinator & Liz Hennig, Substance Misuse Prevention Coordinator
- UNH Cooperative Extension: Seth Wilner, Sullivan County Educator

### Appointed & Located in Unity

- Sullivan County Health Care: Ted Purdy, Nursing Home Administrator
- Department of Corrections: David Berry, Superintendent
- Facilities & Operations: John Cressy, Director
- Conservation District & Natural Resources: Lionel Chute, Director
- Human Resources: Jane Jontz, Director

## Newport: County Seat

- Board of Commissioners: Three part-time elected Commissioners responsible for overall direction, policy, and budget oversight for County departments. Day-to-day administration and supervision exercised by County Manager.
- County Attorney: Full-time elected official and chief law enforcement officer in the County, prosecutes felonies and misdemeanor appeals from the district courts. Works with the State Attorney General, High Sheriff, Department of Corrections, NH State Police and local police departments, and with the medical referee in cases of untimely deaths. Also County's "in-house counsel" on most civil matters.
- High Sheriff: Full-time elected official and the County's top law enforcement officer with statewide jurisdiction. In Sullivan County the Sheriff runs marked rural patrols, supports local law enforcement and manages regional Drug Task Force. Other roles include: prisoner transports, crime prevention, community education, violent crime investigations, search and rescue, community policing, traffic enforcement, drug/criminal investigations, and civil process. Primary law enforcement for Unity and Lempster.

## Newport: County Seat

- Register of Deeds: Full-time elected official, processes documents related to buying, selling, mortgaging, and developing real property. The recording of important documents is mandated and governed by the laws of the State of New Hampshire. Sullivan County Registry of Deeds has records going back to 1827.
- UNH Cooperative Extension: Partnership of Sullivan County, State of New Hampshire and the U.S. Department of Agriculture. Sullivan County Extension educators provide educational programs and assistance in Agriculture, Natural Resource Management, and in Family, Community and Youth Development.
- Regional Public Health Network: Grant-funded program through Department of Health and Human Services that focuses on matters of public health such as emergency preparedness, substance misuse prevention, and now the development of a Regional Public Health Advisory Committee and Community Health Improvement Plan.

## Unity: County Complex

- Sullivan County Health Care: 156 beds  
FY2016 revenue based on the following population mix:  
8 Medicare A patients (currently at 8)  
16 Private patients (currently at 16)  
114 Medicaid patients (currently at 111)  
138 total beds (currently 135 occupied)
- Department of Corrections: 168 beds between “old” jail and Community Corrections Center (currently 109 in-house)
- Facilities: Manages buildings, grounds, and utilities for entire complex, including new wood chip biomass plant that reduced fuel/energy budget by \$200,000 (covers cost of construction debt).
- Natural Resources/Conservation District: Manages County’s 2170 acres of land, including timber management, public access, agricultural and environmental educational programs.
- Human Resources: Oversees recruitment and hiring, personnel benefits and policies, compliance with labor laws, investigations, and employee appreciation and wellness programs.

## Staff by Department

Newport	
Commissioners' Office & County Manager	3.5 FTE
County Attorney & Victim/Witness	1 elected FT, 6 FT
Registry of Deeds	1 elected FT, 3FT
Sheriff's Office	1 elected FT, 5FT/ 9PT
Public Health/Substance Misuse Prevention	3FT

Unity	
Nursing Home	123FT/ 66PT +/-
Corrections	47 FT/8PT
Facilities	10.5 FTE
Human Resources	3.8 FTE
Natural Resources	1 FT (1 in budget)

## Typical Budget Development Process

- February: Department Heads submit budgets to County Manager
- April: County Manager presents budget to Board of Commissioners
- April-May: Budget work sessions with Board of Commissioners and Department Heads (Executive Finance Committee usually present)
- Mid- to Late May: Board of Commissioners submit budget to EFC & send MS-46 to Department of Revenue Administration
- May: EFC Work Sessions on budget
- June: Delegation holds Annual County Convention

**June 23, 2015**  
**6:30 PM**  
**Sunapee Town Hall**

## Fiscal Year 2016 EFC Proposed Budget

	FY2015 FINAL Delegation Budget	FY2016 PROPOSED EFC Budget
Appropriations	\$29,788,594	\$32,140,028
Non-Property Tax Revenue	\$15,098,668	\$18,545,066
Fund Balance for Capital Projects	\$(709,100)	\$(615,000)
Fund Balance to Capital Reserve Fund		\$(445,000)
Fund Balance to SCHC Reserve Account		\$(1,500,000)
Fund Balance to Reduce Tax Rate	\$(100,000)	\$(250,000)
<b>Revenues Raised by Property Tax</b>	<b>\$13,880,826</b>	<b>\$13,594,962</b>

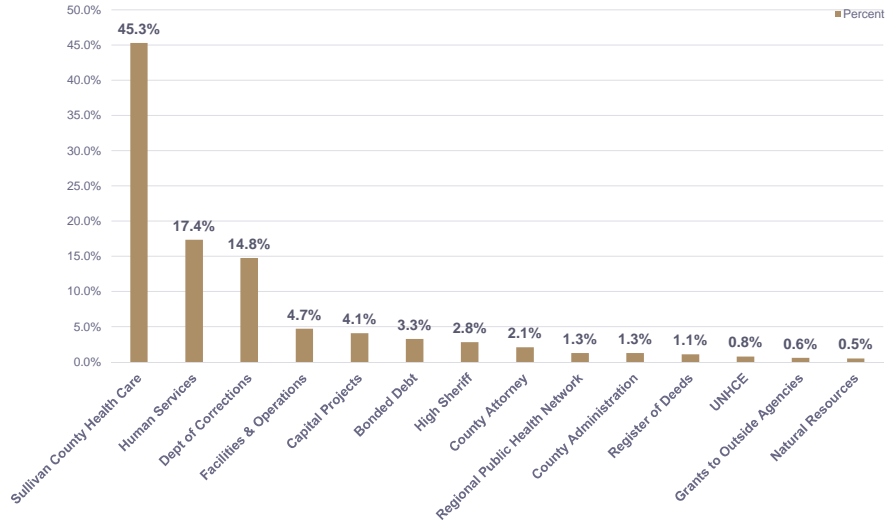
**This is a 2% reduction in property taxes (about 6 cents per \$1,000 in value).**

## Estimated apportionment to Sullivan County communities

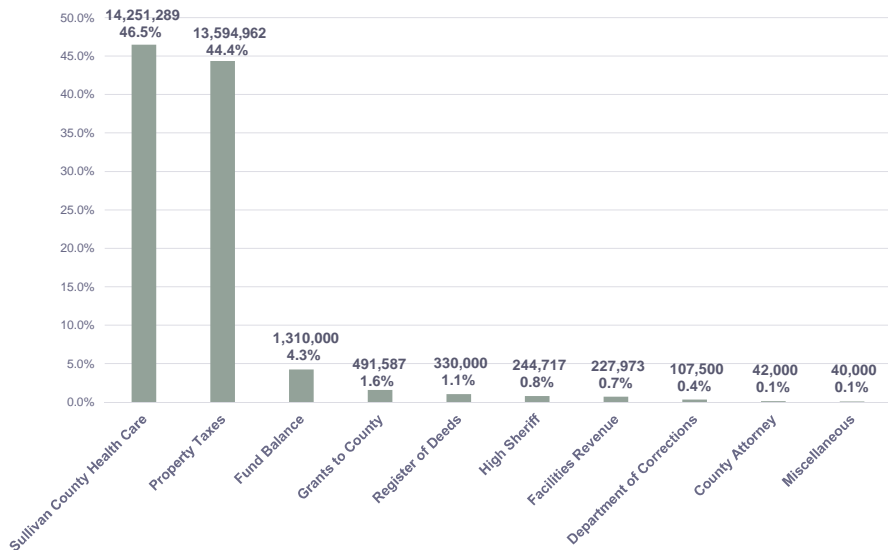
	DRA Equalized Value 2014	DRA Apportionment 2014	DRA Apportionment FY15	Estimated Apportionment FY16	\$ Diff from 2015	Tax Rate Impact
ACWORTH	\$97,580,449	2.1867%	\$303,535	\$297,284	\$(6,251)	\$(0.06)
CHARLESTOWN	\$254,173,102	5.6959%	\$790,635	\$774,352	\$(16,282)	\$(0.06)
CLAREMONT	\$711,341,266	15.9408%	\$2,212,709	\$2,167,140	\$(45,569)	\$(0.06)
CORNISH	\$184,517,950	4.1349%	\$573,964	\$562,144	\$(11,820)	\$(0.06)
CROYDON	\$90,596,443	2.0302%	\$281,811	\$276,007	\$(5,804)	\$(0.06)
GOSHEN	\$68,789,255	1.5415%	\$213,977	\$209,570	\$(4,407)	\$(0.06)
GRANTHAM	\$473,090,541	10.6017%	\$1,471,602	\$1,441,296	\$(30,306)	\$(0.06)
LANGDON	\$60,008,756	1.3448%	\$186,664	\$182,820	\$(3,844)	\$(0.06)
LEMPSTER	\$141,363,549	3.1679%	\$439,728	\$430,672	\$(9,056)	\$(0.06)
NEWPORT	\$413,506,936	9.2665%	\$1,286,261	\$1,259,771	\$(26,489)	\$(0.06)
PLAINFIELD	\$268,967,265	6.0274%	\$836,654	\$819,423	\$(17,230)	\$(0.06)
SPRINGFIELD	\$184,533,414	4.1353%	\$574,012	\$562,191	\$(11,821)	\$(0.06)
SUNAPEE	\$1,167,591,352	26.1651%	\$3,631,927	\$3,557,131	\$(74,796)	\$(0.06)
UNITY	\$119,012,954	2.6670%	\$370,203	\$362,579	\$(7,624)	\$(0.06)
WASHINGTON	\$227,332,554	5.0944%	\$707,144	\$692,581	\$(14,563)	\$(0.06)
<b>TOTAL</b>	<b>\$ 4,462,405,786</b>		<b>\$13,880,826</b>	<b>\$ 13,594,962</b>	<b>\$(285,864)</b>	

*Based on 2014 Equalized Values from Dept. of Revenue Administration*

## FY2016 Expenses % of budget by function



## FY2016 Anticipated Revenue



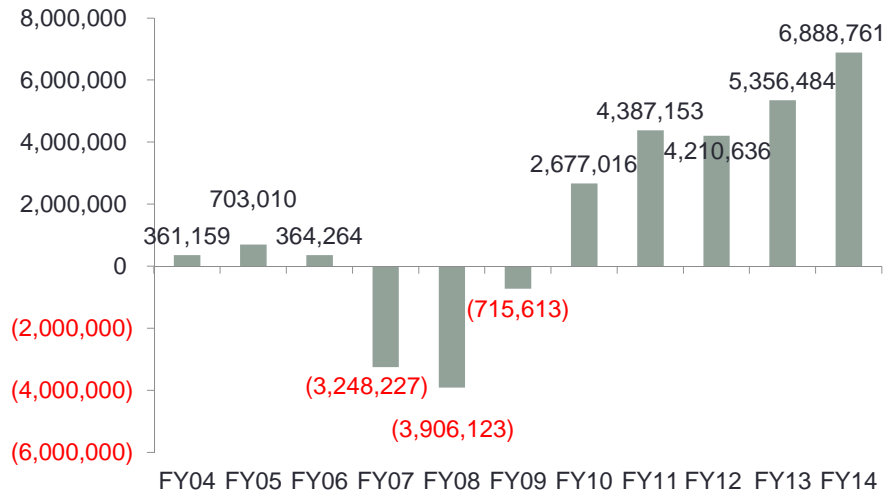
## Fiscal Year 2016: Capital Expenses Offset by Fund Balance

Project	Cost
Unity water system piping	\$ 60,000
Stearns Elevator repair (code requirement)	\$ 90,000
DOC oil tank lines (code requirement)	\$ 45,000
DOC generator	\$ 30,000
Pump station generator	\$ 25,000
Stearns generator	\$ 100,000
Stearns Bathrooms and Plumbing	\$ 160,000
Ahern siding (& architect)	\$ 35,000
Woodhull HVAC	\$ 40,000
Ford Tractor Replacement	\$30,000
	\$615,000

## FY2016 County Grants

COMMUNITY ORGANIZATION	FY2015 Approved	FY2016 EFC Budget
Good Beginnings of Sullivan County	\$30,000	\$30,000
West Central Behavioral Health	\$10,000	\$10,000
Lake Sunapee Area Mediation Program	\$10,000	\$10,000
Big Brothers Big Sister of Western New Hampshire	\$5,000	\$5,000
Turning Points Network	\$55,000	\$65,000
Community Alliance: Family Services	\$25,000	\$25,000
Community Alliance: Transportation	\$25,000	\$25,000
Claremont Soup Kitchen	\$15,000	\$15,000
<b>TOTAL</b>	<b>\$184,500</b>	<b>\$185,000</b>

## Historic Fund Balance Fiscal Years 2004-2014

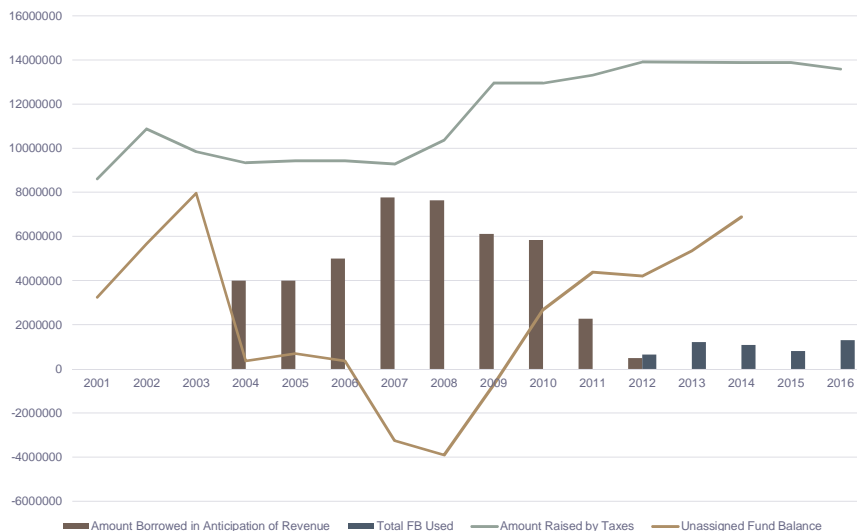


## Tax History

FY	Amount Raised by Taxes	\$\$\$ Change	% Change	Unassigned Fund Balance	Amount Borrowed in Anticipation of Revenue	Fund Balance Used for Capital	Fund Balance Used to Reduce Taxes	Total FB Used	
2001	\$ 8,615,640	2,901,812	50.79%	\$ 3,252,222					
2002	\$ 10,883,753	2,268,113	26.33%	\$ 5,664,823					
2003	\$ 9,840,870	(1,042,883)	-9.58%	\$ 7,956,164					
2004	\$ 9,336,760	(504,110)	-5.12%	\$ 361,159	\$ 4,000,000				
2005	\$ 9,433,119	96,359	1.03%	\$ 703,010	\$ 4,000,000				
2006	\$ 9,433,119	0	0.00%	\$ 364,264	\$ 5,000,000				
2007	\$ 9,283,721	(149,398)	-1.58%	\$(3,248,227)	\$ 7,775,000				
2008	\$ 10,369,380	1,085,659	11.69%	\$(3,906,123)	\$ 7,650,000				
2009	\$ 12,956,211	2,586,831	24.95%	\$(715,613)	\$ 6,125,000				
2010	\$ 12,956,180	(31)	0.00%	\$ 2,677,016	\$ 5,840,000				
2011	\$ 13,310,658	354,478	2.74%	\$ 4,387,153	\$ 2,281,772				Supp.
2012	\$ 13,905,995	595,337	4.47%	\$ 4,210,636	\$ 500,000	\$ 355,500	\$ 300,000	\$ 655,500	\$ 477,009
2013	\$ 13,892,074	(13,921)	-0.10%	\$ 5,356,484		\$ 611,864	\$ 600,000	\$ 1,211,864	\$ 298,000
2014	\$ 13,885,603	(6,471)	-0.05%	\$ 6,888,761		\$ 640,500	\$ 450,000	\$ 1,090,500	
2015	\$ 13,880,826	(4,777)	-0.03%			\$ 709,100	\$ 100,000	\$ 809,100	
2016	\$ 13,594,962	(285,864)	-2.06%			\$ 1,060,000	\$ 250,000	\$ 1,310,000	



## Tax History – Effect of Fund Balance



## Adequate Fund Balance Helps Us...

- Stabilize tax rate over time.
- Fund one-time capital expenditures.
- Hedge against volatility in SCHC revenue.
- Reduces need to borrow in anticipation of tax revenue (tax anticipation notes).
- Healthy fund balance signals reduced risk to potential lenders, resulting in lower interest rates on long-term borrowing.

## Commissioners' Projects & Goals 2015

Goal
Economic Development: Complete USDA RBEG RFP & Study on Unity property
Facilities: Complete Capital Improvements Plan (DONE!)
Public Health Region: Establish Public Health Advisory Committee
Finance: Evaluate County finance structure & policies, including fund balance
Nursing Home: Marketing/feasibility study and strategic planning
Human Resources: Pay & Compensation Study; Recruitment & Retention
Natural Resources: Inventory & natural resources plan; enhance public access & education

## County Convention

June 23, 2015

6:30 PM

Sunapee Town Hall

Edgemont Road (Route 103B, off Route 11)